



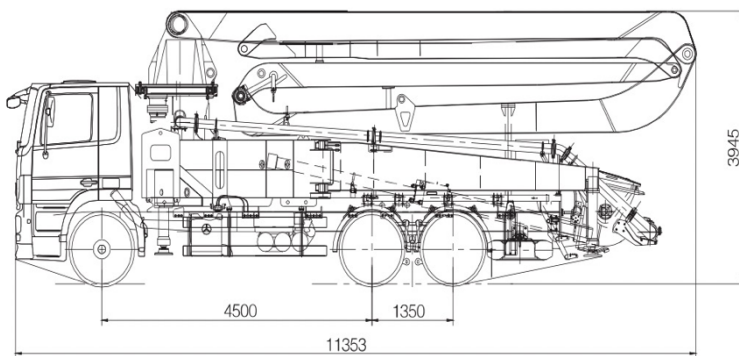
# 43X-5RZ

## TRUCK-MOUNTED CONCRETE PUMP

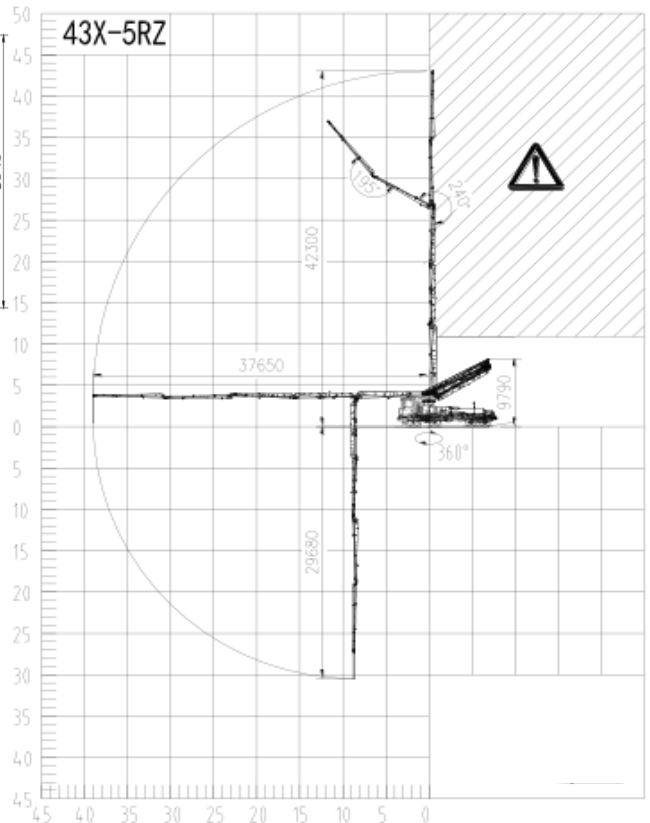
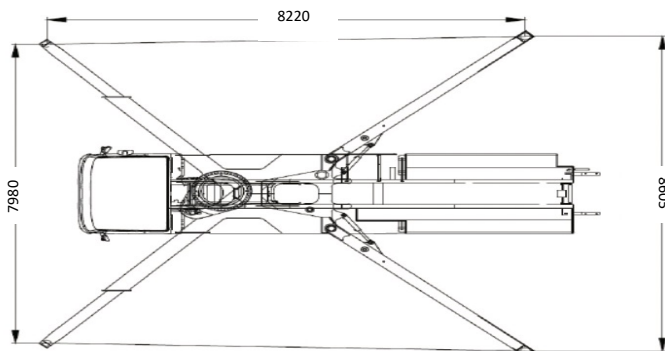
Placing Boom	B5RZ 43
Driven By	Gearbox PTO
Chassis	3 Axles



## Dimensions, Reach Information Diagram, Support



Dimensions varying according to truck assembly





# 43X-5RZ

## TRUCK-MOUNTED CONCRETE PUMP

Placing Boom            B5RZ 43  
 Driven By                Gearbox PTO  
 Chassis                    3 Axles

### Main Feature

- Boom intelligent damping technology: The soft control of booms in starting, slewing and stopping reduces the impacting vibration of booms and therefore makes the vehicle operate more stably, reliably and safely.
- Accurate pumping control technology (APC): Great leap of pumping accuracy and adaptability, improving pump efficiency.
- Adaptive concrete material pumping technology: Improve pumping control system for poor concrete with segregation and big viscosity, and auto-adaptive pumping mode, reducing the block rate by more than 50%.
- Dual-pump and dual-loop hydraulic system: Less hydraulic impact, High efficiency, Low failure rate.
- Three-stage fault diagnosis: boot self-check, process self-check and shutdown detection is adopted to realize the overall control of the product's health condition.

### Standard Equipment

- Compact in design, 43m pump mounted on 3-axes truck.
- Efficient pump unit, ideal for long time use.
- Agile placing boom with 5 arms with unfolding height 9.79m only, which gives a wide work range.
- Proportional radio controls with two speeds boom movement, automatic frequency scanner.
- Double thickness concrete pipes hardened.
- Centralized lubrication system for pumping unit.
- Hard carbide wear plate and cutting ring for PU pumping units.
- Fiberglass hopper covering.
- Use & Maintenance Manuals.
- Spare parts and service manual.

### Optional

- Chassis Brand: Mercedes- Benz, Sinotruk, FAW and *et cetera*.
- Other configuration on demand.

### Placing Boom Technical Data

Model			43X-5RZ
Pipeline diameter		mm	125
Maximum vertical reach		m	42.30
Maximum horizontal distance (from center of slewing axis)		m	37.65
Minimum unfolding height		m	9.79
Section numbers			5
1st section	Length	mm	8350
	Opening angle		90°
2nd section	Length	mm	6720
	Opening angle		180°
3rd section	Length	mm	6700
	Opening angle		180°
4th section	Length	mm	8030
	Opening angle		240°
5th section	Length	mm	8500
	Opening angle		195°
Rotating angle			±270°
End hose length		m	3

### Pumping Unit Technical Data

Max. theoretical output	rn3/h	170
Max. pressure	MPa	8.80
Conc. cylinders (diam. x stroke)	mm	260 x 2100
Concrete hopper capacity		550
Hydraulic circuit		Open

