



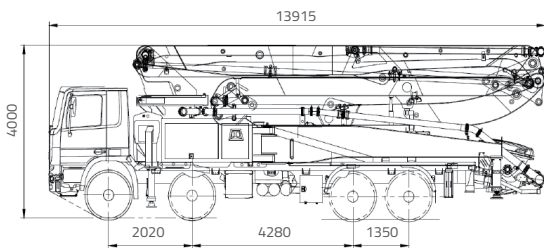
63X-7RZ

TRUCK-MOUNTED CONCRETE PUMP

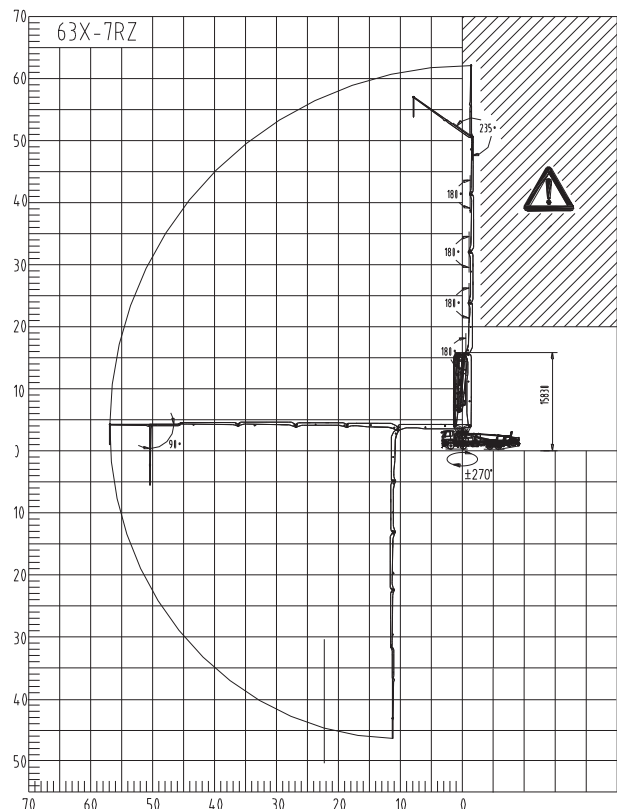
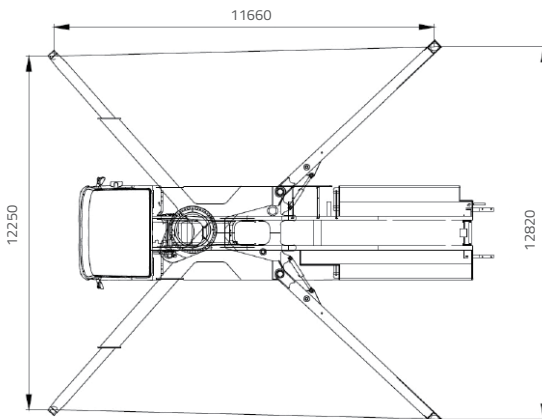
Placing boom	B7RZ 63
Pumping unit	PU1811
Driven by	Gearbox PTO
Chassis	4 axles



Dimensions, Reach Information Diagram, Support



Dimensions varying according to truck assembly





63X-7RZ

Main Feature

- Active boom vibration control technology(ABC):All-position active vibration reduction technology of boom, reducing vibration by 50%. More stable boom, more safety.
- Boom intelligent damping technology:The soft control of booms in starting, slewing and stopping reduces the impacting vibration of booms and therefore makes the vehicle operate more stably, reliably and safely.
- Accurate pumping control technology(APC):Great leap of pumping accuracy and adaptability, improving pump efficiency.
- Adaptive concrete material pumping technology: Improve pumping control system for poor concrete with segregation and big viscosity, and auto-adaptive pumping mode, reducing the block rate by more than 50%.
- Dual-pump and dual-loop hydraulic system: Less hydraulic impact, High efficiency, Low failure rate.
- Three-stage fault diagnosis: boot self-check, process self-check and shutdown detection is adopted to realize the overall control of the product's health condition.
- Long life wearing parts: Reduce working cost remarkably. Continuously improve wearing part's life by using new material, new process and new designing.

Standard Equipment

- Compact in design, 56m pump mounted on 4-axles truck.
- Efficient pump unit, ideal for long time use.
- Agile placing boom with 6 arms with unfolding height 15.8m only, which gives a wide work range.
- Proportional radio controls with two speeds boom movement, automatic frequency scanner.
- Double thickness concrete pipes hardened.
- Centralized lubrication system for pumping unit.
- Hard carbide wear plate and cutting ring for PU pumping units.
- Fiberglass hopper covering.
- Use & Maintenance Manuals.
- Spare parts and service Manual.

Optional

- Chassis brand: Mercedes-Benz, Scania, Sinotruk, ect.
- Other configuration on demand.

TRUCK-MOUNTED CONCRETE PUMP

Placing boom	B7RZ 63
Pumping unit	PU1811
Driven by	Gearbox PTO
Chassis	4 axles

Placing Boom Technical Data

Model		B7RZ 63
Pipeline diameter	mm	125
Maximum vertical reach	m	62.1
Maximum horizontal distance (from center of slewing axis)	m	56.9
Minimum unfolding height	m	15.8
Structure type		RZ
Section numbers		6
Rotating angle		±270°
End hose length	m	3

Pumping Unit Technical Data

Model		PU1811
Maximum theoretical output	m ³ /h	180
Maximum pressure on concrete	bar	11.3
Conc. cylinders (diam. x stroke)	mm	260x2100
Concrete hopper capacity	L	600
Hydraulic circuit		closed

